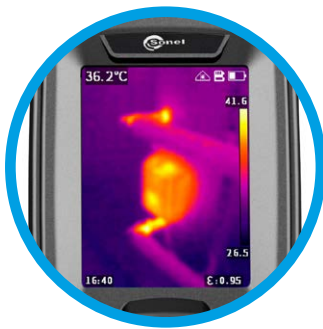




Thermal Imager KT-256F-PRO / 256-PRO / 128-PRO

index: WMGBKT256FPRO / WMGBKT256PRO / WMGBKT128PRO



2.4" display

Clear temperature reading



Large buttons

Conveniently located for flawless control



Sonel KT Mobile



KT-256F-PRO

Autofocus trigger

Sharp image with a single press

Trigger

Temperature measurement with a single press



KT-128-PRO • KT-256-PRO

Trigger

Temperature measurement with a single press

Feel safe with thermography

Simple thermography

KT-128-PRO / 256-PRO / 256F-PRO is a special camera. Economical, practical and handy, it is a powerful tool in everyday work.

The camera is used for basic diagnostics. It is equipped with a matrix having a resolution of:

- » **KT-128-PRO** | 120 x 90 pixels,
- » **KT-256-PRO • KT-256F-PRO** | 256 x 192 pixels, supported by visual camera, laser pointer and additional features to fully meet the needs of users.

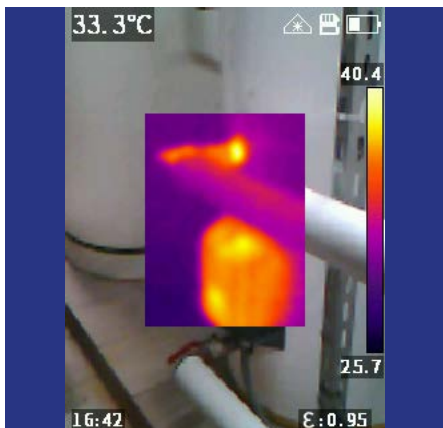
KT-256F-PRO | Autofocus

KT-256F-PRO is equipped with an automatic focus which ensures that your IR measurement pictures will always be sharp and crisp, no matter the distance.

Application

KT-128-PRO / 256-PRO / 256F-PRO is used always when the temperature of objects is important and may affect the operation of the equipment. Particularly useful in:

- power engineering (including PV installations),
- construction sector,
- industry
- HVAC.



Features

- measuring range: -20°C...550°C (-4°F... 1022°F)
- quick start
- fast temperature measurement
- automatic signalling of exceeded alarm threshold
- **KT-256F-PRO** | autofocus
- saving IR images to internal memory
- built-in Li-Ion battery with:
 - » **KT-128-PRO** | 8-hour working time
 - » **KT-256-PRO • KT-256F-PRO** | 11-hour working time
- interfaces: USB type C
- can be set up on a tripod



Sonel KT Mobile

With the application, you can get a preview of the actual image on your phone, and remotely perform a series of other activities by managing the camera from a mobile device. It can be downloaded from **Google Play** and **Apple App Store**.
 Required operating system: Android, iOS

Specifications

	KT-128-PRO	KT-256-PRO	KT-256F-PRO
Detector resolution	120 x 90 / 17 µm VOx		256 x 192 / 12 µm VOx
Detector		7.5~14 µm	
Frame rate		25 Hz / 9 Hz	
Sensitivity	60 mK		45 mK
Focus		Fixed	Auto
Lens (field of vision / focal distance)	50° x 38°/2.28 mm	56° x 48°/3.2 mm	25° x 19°/7 mm
Spatial resolution (IFOV)	7.46 mrad	3.75 mrad	1.71 mrad
Display		2.4" 240 x 320 px LCD	
Image mode		IR / Visual / Infrarufusion MIF / PiP	
Temperature range		Range 1: -20°C...+150°C -4°F...+302°F Range 2: 0°C...+550°C 32°F...1022°F	
Accuracy		±2°C ±4°F or ±2% of reading (for ambient temperature 15°C...30°C, object temp. ≥0°C)	
Image analysis mode		Point. 3 areas. Temperature indication: min, max. Temp. alarm	
Palettes		6	
Super-resolution	2x, 240 x 180		2x, 512 x 384
Emissivity		Selectable from 0.01 to 1.00 or from the list	
Measurement adjustment		Adjustable distance, ambient temperature (reflected)	
Image file format		JPG	
Video file format		IRGD (including temp. information)	
Built-in features		Visual camera 2 MPix, LED flashlight, laser pointer	
Wireless communication		Wi-Fi	
Storage		Built-in memory (16 GB)	
Interfaces		USB type C, tripod	
Power supply	Li-Ion battery (operating time >8 hours), built-in charger (charging time <2.5 hour), AC adapter 100-240 V, 50/60 Hz		Li-Ion battery (operating time >11 hours), built-in charger (charging time <2.5 hour), AC adapter 100-240 V, 50/60 Hz
Operating temperature		-15°C...+50°C 5°F...122°F	
Storage temperature		-40°C...+70°C -40°F...+158°F	
Housing		IP54	
Weight	ca. 0.36 kg 0.79 lbs		ca. 0.38 kg 0.84 lbs

Standard accessories

	KT-128-PRO	KT-256-PRO	KT-256F-PRO
USB charger WAZASZ20	✓	✓	✓
Type C USB cable WAPRZUSBC	✓	✓	✓
Wristband WAPOZPAS1	✓	✓	✓
Declaration of verification	✓	✓	✓

Optional accessories

S-1 carrying case
WAFUTS1

Calibration certificate with accreditation

